

JOYCE BECKER



www.joycebecker.com
jbecker3@hotmail.com

A prize-winning quilter, Joyce R. Becker focuses her art, writing, teaching, and lecturing on landscape quilts. Joyce's books, *Beautifully Embellished Landscapes & Luscious Landscapes*, *Simple Techniques for Dynamic Quilts* were published by C&T Publishing. Joyce's DVD, *Joyce Becker Teaches You Landscape Quilting*, is informative, educational, & entertaining. Feeling blessed to have such a creative profession; Joyce volunteers throughout the quilting community and is one of the founding board members of the Association of Pacific Northwest Quilters. Many articles authored by Joyce have been published in national quilting magazines. Joyce was a featured guest on the Home and Garden Television Network's "Simply Quilts," episode #834. She also appeared on episode #113 of a new PBS series, "M'Liss's World of Quilts". She recently taped a promotional video for the Tsukineko Company. Her quilts have been displayed internationally in contests and invitational exhibits and have appeared in books, magazines and on television. An article by Joyce was published in **Quilting Arts Magazine** in the fall of 2004, Page 88; "Expand your Horizons - Landscape Techniques". Joyce's lively sense of humor and positive attitude result in lectures and workshops that inspire, inform and entertain quilters as she travels throughout the world. Joyce teaches and lectures throughout the United States for guilds and large conferences, such as the International Quilt Festival in Houston, TX, and has traveled to New Zealand, Hawaii, and Canada to teach and lecture.

CLASSES AND SUPPLIES

#101 - MYSTERY LANDSCAPE

All skill levels.

MUST HAVE SEWING MACHINE WITH ABILITY TO LOWER FEED DOGS!

Class Description:

Want to learn how to create a gorgeous landscape quilt top without the headache of selecting and lugging fabrics to class? Designed especially for you, Joyce's kit includes incredibly realistic and gorgeous landscape fabrics. You'll learn Joyce's slick and easy methods of "cut and glue" designing, stitching with invisible thread, and embellishing techniques. **A kit is required for this class and will include all supplies for the class except for the basic supplies listed below.**

Kit fee \$30.00

RECOMMENDED TEXT: *Beautifully Embellished Landscapes – 125 Tips and Techniques to Create Stunning Quilts, Joyce Becker Teaches You Landscape Quilting (DVD) & Luscious Landscapes, Simple Techniques for Dynamic Quilts by Joyce R. Becker, C&T Publishing*

Supply List:

- Sewing machine with ability to do free-motion (lower feed dogs), darning foot, & power strip
- Basic sewing supplies, sketch pad, paper, pen, iron and ironing surface
- Portable working surface (30" square) (Not necessary if we can tape your project onto the wall with blue painter's tape I provide – check with your organizer)
- Pressing cloth or Teflon Pressing Sheet
- Basic sewing supplies, sketch pad, paper, pen
- Sharp scissors - recommend large Fiskar Soft Touch™ or sharp embroidery
- Rotary mat, cutter, rulers (medium sized)
- 505 Repositionable Spray Adhesive (alternatives –Sulky KK spray adhesive)
- Heavy Duty Spray starch (Make your own using 2/3 liquid starch, 1/3 water & a spray bottle)
- Brown paper grocery bag or freezer paper for spraying adhesive/starch
- Clear YLI Wonder monofilament or Superior Monopoly thread

- Matching machine embroidery threads
 - Matching light-weight bobbin thread (recommnd Wonderfil's Invisifil or Bottom Line)
 - Machine embroidery& top-stitch needles in a variety of sizes (75/90)
- Note* See samples of Joyce's quilts @ www.joycerbecker.com*

It's a secret so no photo! Check my gallery of quilts for examples of my work.

#201 - BEAUTIFULLY EMBELLISHED

LANDSCAPES – 2 Day

All skill levels.

MUST HAVE SEWING MACHINE WITH ABILITY TO LOWER FEED DOGS!

Class Description:

Students design and stitch an original landscape design inspired by a photograph, calendar or greeting card. A dynamite workshop making designing, stitching, and embellishing your landscape quilt a breeze! Workshop includes; Joyce's original "snip and glue" raw-edge appliqué techniques along with design, perspective, fabric selection, scale, value, realistic embellishments and finishing techniques with an emphasis on embellishing techniques. No stress class with lots of laughter! All levels but need basic free-motion skills. Workshop includes border selection; blocking and finishing techniques, creating an original label, and quilting design suggestions. ***PLEASE NOTE: If you have respiratory issues, such as asthma, this class might not work for you due to spray adhesive use.***

RECOMMENDED TEXT: *Beautifully Embellished Landscapes – 125 Tips and Techniques to Create Stunning Quilts, Joyce Becker Teaches You Landscape Quilting* (DVD) July 2006 & *Luscious Landscapes, Simple Techniques for Dynamic Quilts* by Joyce R. Becker, June 2003, C&T Publishing

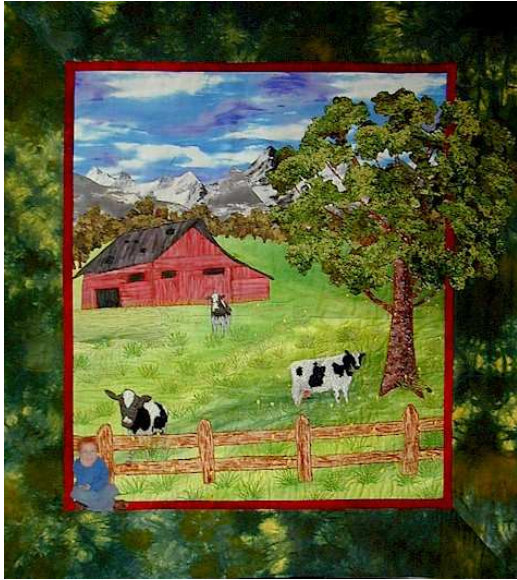
Supply list

- Sewing machine with ability to do free-motion (lower feed dogs)
- Darning or free motion foot
- Iron/ironing board or portable ironing surface, pressing cloth (students can share – NEED SEVERAL!)
- Basic sewing supplies, sketch pad, paper, pen
- Portable working walls for students or ability to pin into walls
- Sharp scissors recommend large Fiskar Soft Touch or sharp embroidery scissors
- Rotary mat, cutter, rulers
- One design inspiration (photo, book, calendar or card)- please enlarge to 8 ½" x 11"
- 505 Repositional Spray Adhesive (alternatives – Roxanne's Glue, Fabric Glue Stick, Sulky Spray)
- Heavy Duty Spray starch (an absolute necessity!)
- Brown paper grocery bag for spraying adhesive
- Lightweight fusible Pellon interfacing ((not fusible web) to cover entire muslin "canvas (see below)

- Muslin or background fabric (hand-dyed fabrics are great!) This background or muslin will be your “canvas”. Your stabilized muslin canvas needs to be larger than your finished design size as it will be squared up
- PLEASE FUSE LIGHTWEIGHT PELLON INTERFACING TO MUSLIN “CANVAS” OR BACKGROUND FABRIC PRIOR TO CLASS –*use medium setting on iron/w steam to apply interfacing
- Pre-starched 1 yard cuts of background fabric suitable for your design (Hand-dyed, Sky-Dye or batiks are excellent choices).
- 1/2 yard cuts of a variety of preprinted commercial fabrics including elements such as; sky, mountains, clouds, rocks, snow (ultra suede), water, flower, leaves, bark and trees, foliage, fence, garden, etc. (Shredded batting, yarn, tulle, or Angelina make good waterfall or waves.) Look for fabric with the correct scale, suggesting texture and dimension. SOLIDS do not work
- YLI Wonder monofilament or Superior Monopoly thread (clear unless your design is dark)
- Pre-wound bobbins, filled with lingerie or light-weight bobbin thread (recommend Bottom Line by Superior –good color selection & weight – try to match your thread with your design or use a neutral.)
- Machine embroidery& top-stitch needles in a variety of sizes (75/90)
- Variety of threads to compliment your design - Variegated threads – Superior Rainbows -King Tut, Sulky Blendables and Ultratwist, cotton embroidery, etc.

Optional: Border & backing fabrics, batting (Hobbs Thermore™) Fabric dye pens, artist colored pencils, textile paint and brushes, matching tulle, polyester organza (patterned and plain to compliment your design (I will bring samples), reducing glass, fusible web, ¼” and open-toed embroidery feet for machine quilting.





#401 - OLD WORLD CHARM

All Skill Levels

Class Description:

Working on the wall, students design an *Old World Charm* landscape quilt using a kit supplied by Joyce. The workshop uses Joyce's quilt, *Old World Charm*, as the model (SEE www.Joycebecker.com (gallery for sample). Workshop includes: Joyce's original "cut & glue" raw-edge appliqué techniques using invisible thread. Joyce shares tips on accomplishing shading & dimension & demonstrates techniques that focus on design, scale, value, & perspective. She discusses free-motion machine embroidery, quilting, & border selection. This workshop is fun & exciting, with most students completing design stage during workshop. NOTE: Sewing Machines not required, this is a design only workshop!

Please note: If you have respiratory issues, such as asthma, this class might not work for you due to spray adhesive use!

KIT FEE \$30.00

Recommended Text: *Beautifully Embellished Landscapes* by Joyce R. Becker

Supply List

- Working wall space – Joyce will supply blue painters tape to hang designs on walls – check with your organizer to see if you need to bring portable working walls (30" square)
- Irons/portable ironing surfaces (Students can share, need several), pressing cloth & power cords)
- **Spray starch (an absolute necessity!) Make your own using 2/3 liquid starch, 1/3 water & a spray bottle or use purchased aerosol or non-aerosol starch**
- **Brown paper grocery bag or freezer paper for spraying adhesive and starch**
- 505™ Repositional Spray Adhesive
- Sharp scissors (recommend Fiskar Softtouch) large or small
- Basic sewing supplies



OLD WORLD CHARM